

Twin

twinsummercentres.com

+44 (0) 20 8269 5678



Junior Summer Centres

Join us at one of our Summer Centres in the UK and Ireland

2026



Welcome to Twin Junior Summer Centres

Contents

About Twin and our centres	04
Our English programmes	06
Tiered packages	09
Academic syllabus	10
UK centres	
Canterbury	14
London Docklands	16
Eastbourne	18
Norwich	20
Nottingham	22
Reading	24
Windsor	26
Irish centres	
Dublin	30
What students think	32
Safeguarding	34



3 hours 6/8
5 hours 18/8
5.5 hours 19/8
4.5 hours 20/8



MEMBER 2024/25



Twin Group, celebrating its 30th anniversary in 2025, has been helping students from all over the world improve their education, training, and work experience. This summer, join us at one of our English summer centres for young learners, where language learning meets fun and adventure!

Our summer programmes offer the perfect blend of education and excitement. Students will enhance their English skills while enjoying a variety of fun activities, exciting excursions, and memorable experiences. With Twin's brand new academic syllabus (view pages 10-11 for further information), your summer is set to be an unforgettable journey of learning and discovery!

Why Twin?



30 years' experience
running high-quality programmes across the UK



Safe and supervised
A secure environment for young learners, with experienced staff and supervised settings.



Wide choice of activities for students
Varied options allow students to choose the ideal setting, activities, and English courses.



Incredible excursions
Students visit England's famous landmarks and experience true British culture



155 nationalities
We've welcomed 155 nationalities from around the world

An action-packed, unforgettable summer experience



Locations

Summer Centres UK & Ireland

- 1 Canterbury (page 14)
- 2 London, Docklands (page 16)
- 3 Eastbourne (page 18)
- 4 Norwich (page 20)
- 5 Nottingham (page 22)
- 6 Reading (page 24)
- 7 Windsor (page 26)
- 8 Dublin, Ireland (page 30)

Taking learning outside of the classroom



About our programmes

Our summer programmes offer a fun and rewarding experience, combining lessons with comfortable accommodation, exciting activities, and excursions. Using a communicative teaching method and project work, we make learning enjoyable and interactive. Our courses help students improve their language skills and gain the confidence to use English in real-life situations.

Our teachers support students to:

- Improve their English skills
- Build confidence in using and understanding English
- Enhance pronunciation and expand vocabulary

Activities

Our activities complement lessons, providing students with opportunities to practice their English while having fun. Sports, arts and crafts, photography challenges, and scavenger hunts are just some of the activities available between lessons.

In the evenings, students can enjoy team games, discos, quiz nights, talent shows and film nights offering more chances to socialise and make new friends.

Student excursions

Students can explore the UK or Ireland with weekly excursions to historic and popular destinations. These excursions are linked to the lesson plans, providing further opportunities to practise English and socialise outside the classroom.

A range of courses, tailored to your needs

Here is a typical week for our standard programme*

Day 1

Student arrival



Morning - Meet & greet, orientation tour

Afternoon - Walking tour of the local area

Evening - Welcome evening with fun and games

Day 2

Student induction



Morning - Student induction and language testing

Afternoon - Campus scavenger hunt!

Evening - Students get together for competition time!

Day 3

Lessons begin!



Morning - Teaching time (English lessons)

Afternoon - Half day excursion (various locations)

Evening - Get your thinking caps on for a Twin quiz night!

Day 4

Half-day excursion/tour



Morning - Teaching time

Afternoon - Half-day excursion (various locations)

Evening - Who did it? Twin murder mystery!

Day 5

Lessons and activities



Morning - Teaching time (English lessons)

Afternoon - Sports tournament

Evening - Dance away at a Twin disco!

Day 6

Full-day excursion/tour



Morning/Afternoon - Full-day excursion (various locations)

Evening - Grab the popcorn and settle down for film night

A range of activities and excursions with English tuition

*Programme subject to change. centre may be required to run a zig-zag programme based on student numbers.



Two exciting English programmes to choose from

We offer two English programmes in our summer centres: **‘Discover London’** at our London-based centres and **‘Junior Explorer’** at all our other centres.

Our English Programmes

Programme	Centre	Lesson Hours	Minimum English Level	Max Class Size	Age	Country	Accommodation Option
Junior Explorer	Canterbury Dublin Eastbourne Norwich Nottingham Reading	15	A1	18	Varies by centre	UK, Ireland	Residential
Discover London	London Docklands Windsor	15	A1	18	10-18	UK	

PLEASE NOTE: 18 year olds will only be accepted as part of group and only if they are still at school.

Explore the historic capital of the UK on foot

Tiered packages

We've divided our two-week (13 nights) packages into different options to help you choose the perfect programme. These vary by centre, and each page gives details on what's included in each option.

Discover London - Docklands

- P Platinum Package**
- 6 full-day walking tours, including entry to some free museums
 - 1 full-day excursion to Brighton inc. Brighton Pier and Brighton Pavilion
 - 1 full-day excursion to Cambridge inc. Punting
 - London Eye, Thames Boat Cruise, Greenwich Royal Observatory, Tower of London, Madame Tussauds
- G Gold Package**
- 6 full-day walking tours, including entry to some free museums
 - 1 full-day excursion to Brighton inc. Brighton Pier and Brighton Pavilion
 - 1 full-day excursion to Cambridge inc. Punting
 - London Eye, Thames Boat Cruise, Greenwich Royal Observatory
- S Silver Package**
- 6 full-day walking tours, including entry to some free museums*
 - 1 full-day excursion to Brighton inc. Brighton Pier
 - 1 full-day excursion to Cambridge inc. Punting
- B Bronze Package**
- 7 full-day walking tours, including entry to some free museums*

*Entrances to attractions at an additional cost.

Junior Explorer

- P Platinum Package**
- 3 full-day excursions
 - 6-7 half-day excursions
 - Entrances to attractions included
- B Bronze Package**
- 2 full-day excursions
 - 4-5 half-day excursions
 - Entrances to selected attractions

Programmes/quantities of excursions vary by centre - please see sample programmes for full details.

Follow tailored tour routes to see the best London has to offer



Our academic syllabus - what sets us apart

Creative, Collaborative, Confidence-Building Project Lessons

Project Lessons **make up 40% of the timetable**, turning English into a hands-on, real-world experience. Students work in teams to research, plan, create, and present – building language skills alongside creativity, critical thinking, and teamwork.

Themes include:

- **Excursion-Based Projects:** inspired by visits to UK landmarks and cultural sites
- **Environmental Projects:** tackling global issues through persuasive English and innovation

Sample Projects:

Depending on the week, students could:

- Design a sustainable fashion campaign on social media
- Research and create a walking tour of a local landmark
- Record a podcast on an environmental issue
- Write original stories based on local legends
- Present an eco-school design

Why students love our programme:

- Real-world relevance
- Digital creativity
- Practical outcomes
- Fun, memorable, and confidence-boosting

These lessons help students see what they can achieve with English. By the end of the course, they'll have a portfolio of work to take home – and the skills to take on new challenges with confidence.

English Pathways: Real-World Skills for Study, Life and Work

New for 2026, English Pathways (30% of the timetable) prepares students for their future – whether that's university, work, or personal growth.

Focus Areas:

- **Academic Skills:** note-taking, revision, time management
- **Career English:** CVs, interviews, workplace communication
- **Public Speaking:** presentations, persuasive language
- **Life Skills:** leadership, decision-making, goal setting

Delivered by qualified EFL teachers, the lessons are engaging and tailored to age and level, helping students build English and essential skills for the future.

What makes it different?

- Combines English with future-ready skills
- Builds confidence and independence
- Develop transferable skills for the future.
- Adds value – at no extra cost

Sample Weekly Timetable

Our summer programme follows a clear three-part structure:

- **Coursebook Lessons (30%):** build core English skills like grammar and vocabulary
- **English Pathways (30%):** focus on communication, leadership and practical English for study and work
- **Project Lessons (40%):** creative group projects linked to excursions and environmental topics

	Monday	Tuesday	Wednesday	Thursday	Friday
Lesson 1	Coursebook	English Pathways	Coursebook	English Pathways	Coursebook
Lesson 2	English Pathways	Coursebook	English Pathways	Coursebook	English Pathways
Lesson 3	Project	Project	Project	Project	Project
Afternoon	Half Day Activity	Half Day Activity	Half Day Activity	Half Day Activity	Half Day Activity
Evening	Evening Activity	Evening Activity	Evening Activity	Evening Activity	Evening Activity

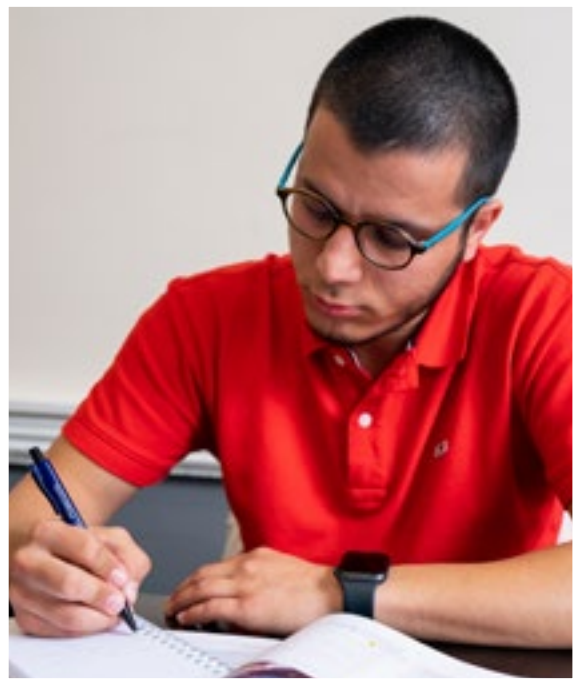
What makes Twin different?

We offer more than just accredited English courses. Our wider education programmes across the UK, Ireland and Spain focus on employability, vocational training, apprenticeships and internships.

We've won multiple awards for our internship services and deliver career skills training at top UK universities. Our programmes help students prepare for the world of work – from writing CVs and preparing for interviews to gaining real industry experience.

We also run government-funded training in areas like cybersecurity, customer service, and leadership. With years of experience helping learners build confidence and career-ready skills, we bring this expertise into our summer courses – so students leave ready for what's next.

Our UK centres



St Edmund's School, Canterbury

Join our summer centre in Canterbury, one of England's most historic and beautiful cities. Based at St Edmund's School, students enjoy modern facilities, full-board accommodation, and 24-hour supervision on a stunning 62-acre campus with top sports amenities and a swimming pool. The programme blends fun, interactive lessons with exciting trips to London, Dover, and Canterbury Cathedral. Evening activities build friendships and confidence while students explore British life and improve their English. With its rich heritage and safe, welcoming environment, Canterbury offers the perfect setting for a summer of learning, adventure, and personal growth.



Canterbury centre information

Student age	8-17 years old
Room type	Twin, triple or multi-bedded rooms with shared bathrooms. Or single rooms for a supplement fee.
Class location	On-campus
Meals	On-campus, choice of two mains, dessert, fruit and drinks
Catering	Vegetarian, vegan, halal, gluten and lactose free
Laundry	On-campus (for a fee)
Sports facilities	Tennis and netball courts, an all-weather astro-turf pitch, cricket pitch, and a 25-metre outdoor swimming pool. Indoor sports hall with a fitness suite.
Nearest airport (approx. timings by train)	London City Airport (LCY) 1 hour and 11 minutes London Stansted (STN) 2 hours and 18 mins London Gatwick (LGW) 2 hours and 26 mins London Heathrow (LHR) 2 hours and 29 mins minutes

Tiered packages available:

B Bronze

P Platinum

Monday Arrivals - 2026

13 nights - 14 days

Monday 6th or 20th July or
Monday 3rd August

*ask your sales rep for 1 week and +3-week arrival dates.

Explore London and Canterbury

Sample bronze programme

DAYTIME		EVENING
Arrivals, Induction & Campus Tour		Welcome Evening
Lessons (3 hours 20 mins)	Canterbury & Cathedral	British Culture Night & Quiz
Lessons (3 hours 20 mins)	Onsite Activities	"Trashion" Show
Lessons (3 hours 20 mins)	Ashford Shopping Outlet	Sports or Murder Mystery
Lessons (3 hours 20 mins)	Onsite Activities	Disco or Karaoke
Full day excursion to London, walking tour and National Gallery		Movie Night
Onsite Activities		Casino Night
Canterbury and punting	Lessons (3 hours 20 mins)	Photo Challenge
Onsite Activities	Lessons (3 hours 20 mins)	Game Show Evening
Dover Castle	Lessons (3 hours 20 mins)	Sports or Scavenger Hunt
Onsite Activities	Lessons (3 hours 20 mins)	International Talent Show
Canterbury & Beaneys Museum	Lessons (3 hours 20 mins)	Disco & Farewell Party
Full day excursion to London and London Science Museum		Movie Night
Departures		



Explore London and Canterbury

University of East London Docklands campus

Our summer centre at the University of East London's Docklands campus offers students a lively, modern experience right by the historic Royal Docks. Just a short walk to the DLR and with the Elizabeth Line nearby, central London is only 15 minutes away - perfect for exploring the city. Students learn in up-to-date lecture theatres and seminar rooms, with access to a sports centre, campus shop, café, and social spaces. It's a brilliant setting for summer learning, combining comfort, convenience and a real taste of student life in one of London's most exciting areas.



Docklands centre information

Student age	10-18* years old <i>*18+ will only be admitted as part of a group</i>
Room type	Single bed with en-suite bathroom
Class location	On-campus
Meals	On-campus, choice of two mains, dessert, fruit and drinks
Catering	Vegetarian, vegan, halal, gluten, nut and lactose free
Laundry	On-campus (for a fee)
Sports facilities	Badminton court, outdoor pitch, volleyball court, indoor sports hall, gym.
Nearest airport (approx. timings by train)	London City Airport (LCY) 15 mins London Gatwick (LGW) 40-50 mins London Heathrow (LHR) 50-60 mins London Stansted (STN) 1 hour and 20 mins

Tiered packages available:

- B

Bronze
- S

Silver
- G

Gold
- P

Platinum

Wednesday Arrivals - 2026

- 14 nights - 15 days
- Wednesday 1st , 15th or 29th July

*ask your sales rep for 1 week and +3-week arrival dates.

Explore London

Sample bronze programme

DAYTIME		EVENING
Arrivals, Induction & Campus Tour		Welcome Evening
Full day excursion to London with Royal and Westminster walking tour		British Culture Night & Quiz
Lessons (3 hours)	Lessons (3 hours)	"Trashion" Show
Full day excursion to London with Tower/South Bank walking tour		Sports or Murder Mystery
Full day excursion to London with British Museum and Oxford Street		Movie Night
Lessons (3 hours)	Lessons (3 hours)	Disco or Karaoke
Full day excursion to London with Science Museum and Hyde Park		Casino Night
Lessons (3 hours)	Lessons (3 hours)	Photo Challenge
Full day excursion to Greenwich with walking tour and Maritime Museum		Game Show Evening
Lessons (3 hours)	Lessons (3 hours)	Movie Night
Full day excursion to London with Harry Potter walking tour		Sports or Scavenger Hunt
Onsite activities		International Talent Show
Lessons (3 hours)	Lessons (3 hours)	Team Games
Full day excursion to London with Camden Town and Market		Disco & Farewell Party
Departures		



Explore London

Twin English Centre, Eastbourne

Set in the scenic seaside town of Eastbourne, our Summer Centre is based in *Compton Place*, a stunning 18th-century Grade I listed mansion once visited by Kings, Queens and Prime Ministers. The campus offers a warm, family-style atmosphere with shared dorms, 36 classrooms, Wi-Fi, and both indoor and outdoor sports facilities. Just a short walk from the beach and lively town centre, students can enjoy the best of the city, the seaside, and 10 acres of private grounds – all in one location. With a full programme of engaging lessons, fun activities and exciting excursions, students aged 8–17 can improve their English, discover the UK, and make new friends in a safe, supportive and unforgettable summer environment.



Eastbourne centre information

Student age	8-17 years old
Room type	Dormitory with shared bathroom
Class location	On-campus
Meals	On-campus, choice of two mains, dessert, fruit and drinks
Catering	Vegetarian, vegan, halal, gluten, nut and lactose free
Laundry	On-campus (for a fee)
Sports facilities	Indoor games room, common room, tennis and basketball court, volleyball and football nets. Large garden area for outdoor games.
Nearest airport (approx. timings by train)	London Gatwick (LGW) 55 mins London Heathrow (LHR) 1 hour and 45 mins London Luton (LTN) 2 hours London Stansted (STN) 2 hour and 15 mins

Tiered packages available:

P **Platinum**

Friday Arrivals - 2026

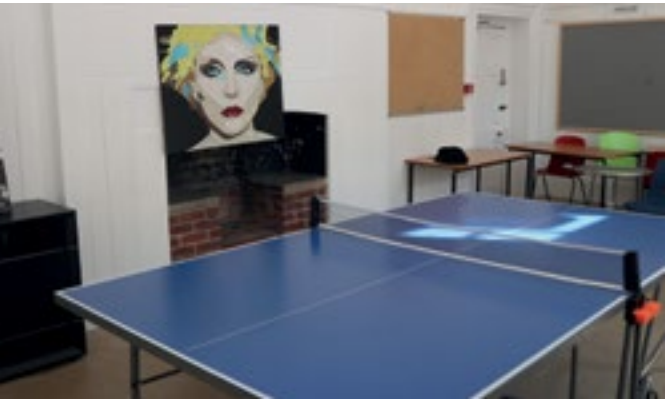
13 nights - 14 days

Any Friday in June, July or August

*ask your sales rep for 1 week and +3-week arrival dates.

Sample platinum programme

DAYTIME		EVENING
Arrivals, Induction & Campus Tour		Welcome Evening
Full-day excursion to London with London Eye, walking tour and shopping		British Culture Night & Quiz
Full-day excursion to Canterbury with Cathedral and walking tour		"Trashion" Show
Lessons (3 hours 20 mins)	Eastbourne town centre	Sports or Murder Mystery
Lessons (3 hours 20 mins)	Cuckmere and Beachy Head	Disco or Karaoke
Lessons (3 hours 20 mins)	Lewes Castle and Barbican	Movie Night
Lessons (3 hours 20 mins)	Lessons (3 hours 20 mins)	Casino Night
Lessons (3 hours 20 mins)	Towner Art Gallery & Pier	Photo Challenge
Full-day excursion to Brighton with various activities		Game Show Evening
Full-day excursion to Hastings with Smugglers Caves, Aquarium and Castle		Sports or Scavenger Hunt
Lessons (3 hours 20 mins)	Mini Golf	International Talent Show
Lessons (3 hours 20 mins)	Lessons (3 hours 20 mins)	Disco & Farewell Party
Lessons (3 hours 20 mins)	Cream Tea	Movie Night
Departures		



Explore London and Eastbourne

Explore London and Eastbourne

University of East Anglia, Norwich

Discover the magic of Norwich this summer - a vibrant city steeped in history, creativity, and natural beauty. Home to the UK's largest medieval cathedral and the iconic Norwich Castle, it offers the perfect setting to immerse yourself in English culture while exploring its scenic riverside and bustling markets. Our summer centre is located on the University campus, surrounded by 145 hectares of lakes, woodlands, and nature trails. With modern buildings, lecture theatres, and easy access to the city centre, students enjoy the best of both worlds: academic excellence and outdoor adventure.



Norwich centre information

Student age	10-18* years old <i>*18+ will only be admitted as part of a group</i>
Room type	Single bed with en-suite bathroom
Class location	On-campus
Meals	On-campus, choice of two mains, dessert, fruit and drinks
Catering	Vegetarian, vegan, halal, gluten, nut and lactose free
Laundry	On-campus for a fee
Sports facilities	On-site gym, swimming pool, indoor climbing wall, athletics track, indoor and outdoor courts.
Nearest airport (approx. timings by train)	Norwich International Airport (NWI) 12 min (bus only) London Stansted (STN) 1 hours and 56 mins London Gatwick (LGW) 2 hours and 50 mins London Heathrow (LHR) 2 hours and 55 mins

Tiered packages available:

- B Bronze
- P Platinum

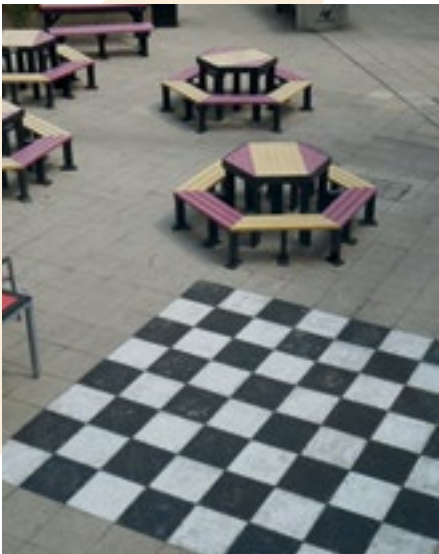
Wednesday Arrivals - 2026

13 nights - 14 days
Wednesday 1st or 15th July

**ask your sales rep for 1 week and +3-week arrival dates.*

Sample bronze programme

DAYTIME		EVENING
Arrivals, Induction & Campus Tour		Welcome Evening
Lessons (3 hours 20 mins)	Norwich and walking tour	British Culture Night & Quiz
Lessons (3 hours 20 mins)	Onsite Activities	"Trashion" Show
Lessons (3 hours 20 mins)	Norwich and Norwich Castle	Sports or Murder Mystery
Full day excursion to London with walking tour and National Gallery		Movie Night
Norwich and Norwich Cathedral	Lessons (3 hours 20 mins)	Disco or Karaoke
Onsite Activities	Lessons (3 hours 20 mins)	Casino Night
Sainsbury Centre	Lessons (3 hours 20 mins)	Photo Challenge
Onsite Activities	Lessons (3 hours 20 mins)	Game Show Evening
Norwich and Norwich Museum	Lessons (3 hours 20 mins)	Sports or Scavenger Hunt
Full-day excursion to Cambridge with punting and walking tour		Movie Night
Onsite Activities		International Talent Show
Lessons (3 hours 20 mins)	Onsite Activities	Disco & Farewell Party
Departures		



University of Nottingham, Nottingham

Set in the legendary city of Robin Hood, Nottingham is one of the UK's top student destinations - perfect for a summer learning experience. Centrally located and easy to explore on foot, the city blends vibrant culture with historic charm and modern sustainability. Students study in bright classrooms with access to facilities like a games room, swimming pool, sports hall, and social spaces. The campus is a short bus or tram ride from the city centre, with plenty to discover - from literary landmarks to scenic surroundings. It's an ideal setting to improve your English, make friends, and experience life in a UNESCO City of Literature.



Nottingham centre information

Student age	10-18* years old *18+ will only be admitted as part of a group
Room type	Single bed with en-suite bathroom
Class location	On-campus
Meals	On-campus, choice of two mains, dessert, fruit and drinks
Catering	Vegetarian, vegan, halal, gluten, and lactose free
Laundry	On-campus (for a fee)
Sports facilities	Indoor sports hall, ping pong table, swimming pool, campus walking and cycling routes.
Nearest airport (approx. timings by train)	East Midlands (EMA) 15 mins by train, 30 mins by bus Birmingham (BHX) 1 hour and 45 mins Manchester (MAN) 2 hours and 2 mins London Stansted (STN) 3 hours and 10 mins

Tiered packages available:

B Bronze

P Platinum

Wednesday Arrivals - 2026

13 nights - 14 days

Wednesday 1st or 15th July

*ask your sales rep for 1 week and +3-week arrival dates.

Explore London and Nottingham

Sample bronze programme

DAYTIME		EVENING
Arrivals, Induction & Campus Tour		Welcome Evening
Lessons (3 hours 20 mins)	Nottingham and walking tour	British Culture Night & Quiz
Lessons (3 hours 20 mins)	Onsite Activities	"Trashion" Show
Lessons (3 hours 20 mins)	Nottingham and Nottingham Castle	Sports or Murder Mystery
Full day excursion to London with walking tour and National Gallery		Movie Night
Nottingham and Cathedral	Lessons (3 hours 20 mins)	Disco or Karaoke
Onsite Activities	Lessons (3 hours 20 mins)	Casino Night
National Justice Museum	Lessons (3 hours 20 mins)	Photo Challenge
Onsite Activities	Lessons (3 hours 20 mins)	Game Show Evening
Contemporary Art Gallery	Lessons (3 hours 20 mins)	Sports or Scavenger Hunt
Full day excursion to York and York Minster Cathedral		Movie Night
Onsite Activities		International Talent Show
Lessons (3 hours 20 mins)	Onsite Activities	Disco & Farewell Party
Departures		



Explore London and Nottingham

Bradfield College, Reading

Nestled in Berkshire’s scenic countryside just 40 miles from London, Bradfield College blends historic charm with modern excellence. Founded in 1850, the school welcomes students and offers top-tier facilities like the Blackburn Science Centre, The Greek Theatre, and extensive sports amenities. Its Summer Centre invites students from around the world to learn English in a traditional boarding school setting. With easy access to London, Windsor, and Oxford, and a campus surrounded by nature, Bradfield offers enriching excursions, high-quality education, and a safe, vibrant environment for international learners to experience British culture and make lifelong friends.



Reading centre information

Student age	8-17 years old
Room type	Single, twin and small dormitory rooms with shared bathrooms (max 5 beds per room)
Class location	On-campus
Meals	Full board catering in the on-site dining hall
Catering	Vegetarian, vegan, halal, gluten, and lactose free
Laundry	On-campus (for a fee)
Sports facilities	Indoor and outdoor tennis courts, swimming pool, common room, arts studio
Nearest airport (approx. timings by train)	London Heathrow (LHR) 58 mins London Gatwick (LGW) 1 hour and 28 mins London Luton (LTN) 1 hour and 46 mins London Stansted (STN) 1 hour and 47 mins

Tiered packages available:

- B Bronze
- P Platinum

Monday Arrivals - 2026

13 nights - 14 days
Monday 29th June, Monday 13th or 27th July

*ask your sales rep for 1 week and +3-week arrival dates.

Sample bronze programme

DAYTIME		EVENING
Arrivals, Induction & Campus Tour		Welcome Evening
Lessons (3 hours 20 mins)	Reading and walking tour	Irish Culture Night & Quiz
Lessons (3 hours 20 mins)	Onsite Activities	"Trashion" Show
Lessons (3 hours 20 mins)	Oracle Shopping Centre	Sports or Murder Mystery
Lessons (3 hours 20 mins)	Onsite Activities	Disco or Karaoke
Full day excursion to London with walking tour and National Gallery		Movie Night
Onsite Activities		Casino Night
Onsite Activities	Lessons (3 hours 20 mins)	Photo Challenge
Windsor and walking tour	Lessons (3 hours 20 mins)	Game Show Evening
Onsite Activities	Lessons (3 hours 20 mins)	Sports or Scavenger Hunt
Reading and Reading Museum	Lessons (3 hours 20 mins)	International Talent Show
Onsite Activities	Lessons (3 hours 20 mins)	Disco & Farewell Party
Full day excursion to London and London Science Museum		Movie Night
Departures		



Buckinghamshire New University – High Wycombe Campus, Windsor

Set in the vibrant town of High Wycombe, the Twin Summer Centre offers a dynamic and immersive experience for students. Based at the university's flagship campus with a rich history and state-of-the-art facilities – including Film & TV suites, sports halls, and drama studios – it's perfect for creative and active learners. Students can enjoy a lively on-site café, and a range of sports like basketball, volleyball, and indoor football. Surrounded by the stunning Chiltern Hills and with quick access to London, Windsor, and Oxford, this centre combines academic excellence, outdoor adventure, and cultural exploration.



Windsor centre information

Student age	10-18* years old *18+ will only be admitted as part of a group
Room type	Single and twin en-suite bedrooms
Class location	On-campus
Meals	Full board catering in the on-site dining hall
Catering	Vegetarian, vegan, halal, gluten, and lactose free
Laundry	On-campus (for a fee)
Sports facilities	Sports/events hall, fitness centre, dance/drama studios, ping pong table
Nearest airport (approx. timings by train)	Birmingham (BHX) 1 hour and 36 mins London Heathrow (LHR) 1 hour and 51 mins London Gatwick (LGW) 1 hour and 55 mins London Stansted (STN) 2 hours

Tiered packages available:

- B

Bronze
- S

Silver
- G

Gold
- P

Platinum

Wednesday Arrivals - 2026

13 nights - 14 days
Wednesady 1st, 15th or 29th July

*ask your sales rep for 1 week and +3-week arrival dates.

Explore London and Windsor

Sample bronze programme

DAYTIME		EVENING
Arrivals, Induction & Campus Tour		Welcome Evening
High Wycombe walking tour	Windsor walking tour	British Culture Night & Quiz
Lessons (3 hours)	Lessons (3 hours)	"Trashion" Show
Full day excursion to London with Royal and Westminster walking tour		Sports or Murder Mystery
Onsite Activities		Movie Night
Lessons (3 hours)	Lessons (3 hours)	Disco or Karaoke
Full day excursion to London with Science Museum and Hyde Park		Casino Night
Lessons (3 hours)	Lessons (3 hours)	Photo Challenge
Full day excursion to London with Tower Bridge/South Bank walking tour		Game Show Evening
Lessons (3 hours)	Lessons (3 hours)	Sports or Scavenger Hunt
Full day excursion to London with British Museum and Oxford Street		Movie Night
Onsite Activities		International Talent Show
Lessons (3 hours)	Lessons (3 hours)	Disco & Farewell Party
Departures		



Explore London and Windsor

Our Ireland centre



The Long Room - Trinity College



Dublin



River Liffey



The King's Hospital, Dublin

Set just 20 minutes from Dublin city centre, Twin's Dublin Summer Centre offers students a unique blend of learning and cultural adventure. Based at King's Hospital School, the programme includes full-board accommodation, and access to superb facilities on a beautiful 80-acre campus. With a history dating back to 1669, the school combines tradition and innovation, offering sports, performing arts, and modern boarding suites. Students enjoy trips to Dublin's top attractions and exciting excursions to Glendalough and Galway, all in a warm, safe environment that supports language development and friendship.



Dublin centre information

Student age	10-17
Room type	Dormitory with shared en-suite bathroom
Class location	On-campus
Meals	On-campus, choice of two mains, dessert, fruit and drinks
Catering	Vegetarian, vegan, halal, gluten, and lactose free
Laundry	On-campus (for a fee)
Sports facilities	Sports hall, gymnasium, indoor swimming pool, astro-pitches, tennis courts, indoor and outdoor basketball courts, playing fields.
Nearest airport (approx. timings by train)	Dublin (DUB) 15 mins

Tiered packages available:

- B Bronze
- P Platinum

Monday Arrivals - 2026

- 13 nights - 14 days
- Monday 29th June, 13th or 27th July

*ask your sales rep for 1 week and +3-week arrival dates.

Explore Dublin

Sample bronze programme

DAYTIME		EVENING
Arrivals, Induction & Campus Tour		Welcome Evening
Lessons (3 hours 20 mins)	Dublin and walking tour	Irish Culture Night & Quiz
Lessons (3 hours 20 mins)	Onsite Activities	"Trashion" Show
Lessons (3 hours 20 mins)	National History or Archaeology Museum	Sports or Murder Mystery
Lessons (3 hours 20 mins)	Onsite Activities	Disco or Karaoke
Full day excursion to Galway with Museum or Cathedral		Movie Night
Onsite Activities		Casino Night
Dublin and Dublinia	Lessons (3 hours 20 mins)	Photo Challenge
Onsite Activities	Lessons (3 hours 20 mins)	Game Show Evening
Liffey Valley Shopping Centre	Lessons (3 hours 20 mins)	Sports or Scavenger Hunt
Onsite Activities	Lessons (3 hours 20 mins)	International Talent Show
Dublin and Phoenix Park	Lessons (3 hours 20 mins)	Disco & Farewell Party
Full day excursion to Malahide and Malahide Castle		Movie Night
Departures		



Explore Dublin

What students think

We love to see you posting on social media about your time in our centres. Check out some of the pictures and feedback from previous and current students:

*Don't take our word for it,
hear from past students...*

There is a wonderful mix of student nationalities at Twin, you can learn a lot from each other's cultures and experiences. I now have international friends! - *Pepe, Spain*

Having the chance to see lots of different sights such as The London Eye, The British Museum and Chinatown - *Veronica, Italy*

They are professional; very good experience. Friendly atmosphere and fun - *Karla, Czech Republic*

There is a nice student community at Twin, a good mix of nationalities. I felt like every student matters - *Rosie, Brazil*

I went sightseeing around the city and saw London Bridge, Big Ben and the O2 Arena - *Ahmed Salim, Oman*

Teachers are great. Everything is good in general - *Alhas, Turkey*



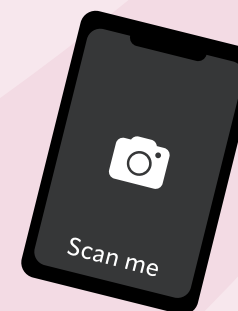
We very much liked the Eastbourne campus, we learnt a lot and made friends - *Dorin, Romania*

I recommend Dublin with Twin for everyone - *Przemyslaw, Poland*

"In my class I learned from the ground up, the teacher made everything so interesting - *Inez, Portugal*

Follow us on social media

See what past student's have been getting up to on our programmes.



Be part of our story!

Safety and wellbeing

The safety and wellbeing of our students is our highest priority. As accredited members of English UK, we uphold strict safeguarding standards to ensure every student enjoys a secure and enriching experience during their stay.

What we provide:

- 24-hour emergency contact number for reassurance
- Safeguarding leads on duty at all centres
- Dedicated Twin Group Leaders assigned to individual students
- Welfare officers available to offer guidance and support
- Staff and students have access to local medical services
- First-aid trained personnel and clear emergency procedures in place
- High level of student supervision

Staff recruitment and suitability

We follow a thorough recruitment process:

- All staff undergo enhanced police checks according to the local jurisdiction such as the DBS in the UK and Garda Vetting in Ireland
- All staff complete safeguarding training and additional courses
- Background checks are complete on every staff member.
- Staff are trained to listen and respond to students with sensitivity

Before arrival

We strive to meet dietary, medical and educational requirements:

- Families are asked to inform us of specific needs before arrival
- Information is handled confidentially and shared with relevant staff

Activities and excursions

Students are supervised throughout their time on site and during trips:

- Activity leaders accompany students on all excursions
- Transport arranged by Twin is fully supervised
- All students receive a lanyard with emergency contact details



Get in touch!

We'd love to hear from you



Twin Group
1st Floor, The Greenwich Centre,
12 Lambarde Square,
Greenwich, London
SE10 9GB
United Kingdom



+44 (0) 20 8269 2910



sales@twinuk.com

twinsummercentres.com