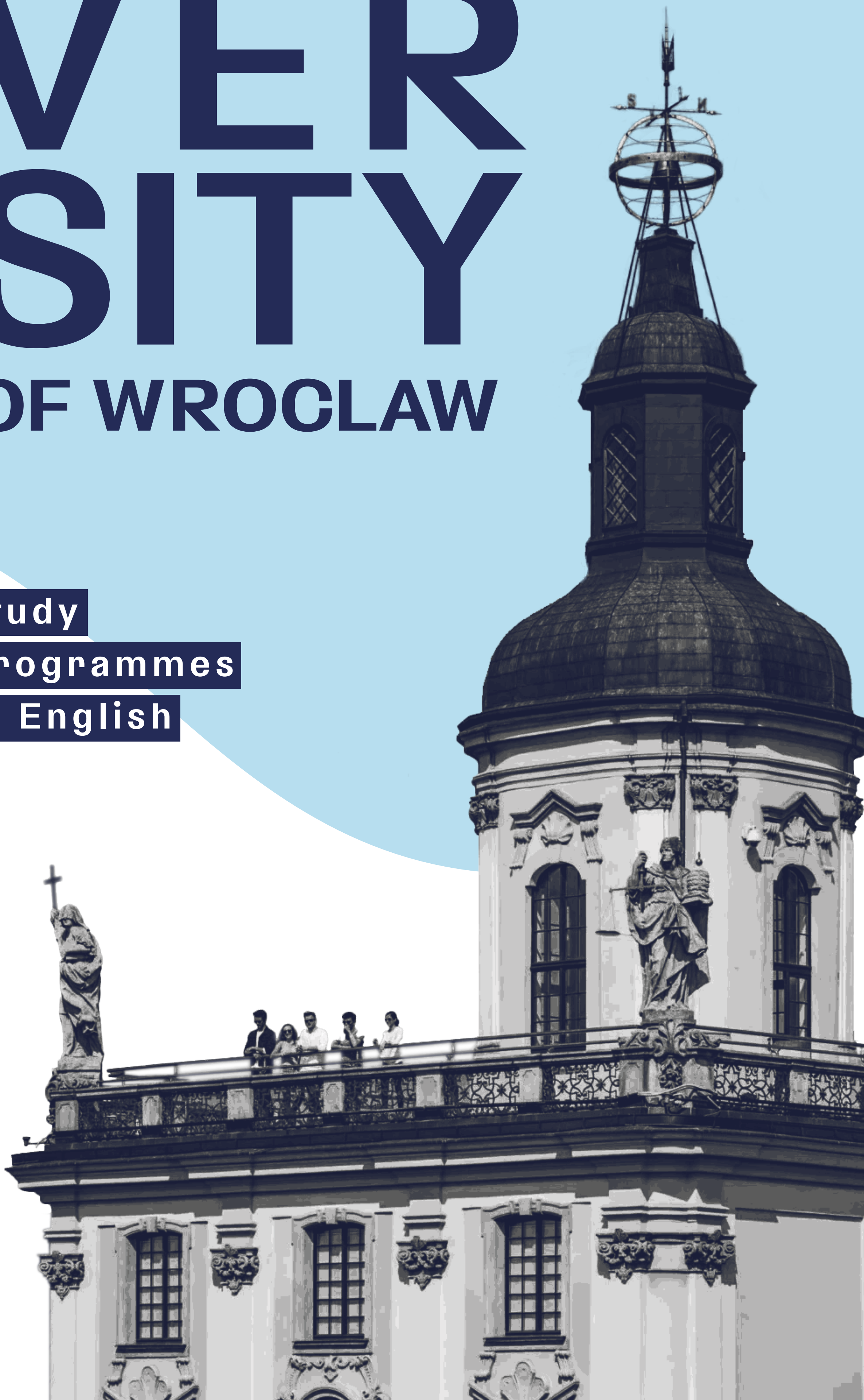


# UNI VER SITY OF WROCLAW

study  
programmes  
in English



## UNIVERSITY OF WROCLAW

The University of Wroclaw has rich history of more than three centuries. It evolved from a modest Jesuit school into one of the biggest academic institutions in Poland.

The University of Wroclaw has 150 study programmes, 23 000 students, almost 4 000 researchers and academic staff. According to rankings it is one of the most important classic universities in Poland. Since the beginning of the 20<sup>th</sup> century, UWr has produced 9 Nobel Prize Winners. Our highly qualified scientists publish several thousand papers each year and participate in over 280 research projects, which often lead to cutting edge inventions and patents.

We are the 3<sup>rd</sup> Polish university most often chosen by foreign students, which means that at the University of Wroclaw you will be able to meet students from all over the world. We are located in nearly 50 buildings on several campuses. Our students learn in historic buildings (the main building or the buildings of the Faculty of Philology) as well as modern ones (the education and research complex of the Faculty of Biotechnology or the University Library).

## UWR IN THE WORLD

The University of Wroclaw belongs to the **Arqus alliance** of European universities - by starting your studies at the University of Wroclaw you will be able to profit from courses, seminars and research laboratories in Leipzig, Granada, Minho, Lyon, Graz, Padua, Vilnius and Maynooth.

The University of Wroclaw is one of ten and the only university in south-western Poland participating in the government program '**Initiative of Excellence - Research University**'. This project assumes many benefits for current and future students of UWr, including purchase of new research equipment, scholarship programmes, grants, tutoring and expanding the offer of programs in English.

## THE CITY OF WROCLAW

With its 5 rivers, 12 islands and 112 bridges Wroclaw had been dubbed 'The Polish Venice'. Parks and squares take up 1/3rd of this 1000-year-old city and its enchanting architecture and friendly atmosphere attracts lots of visitors. Weather-wise it is the warmest city in Poland. You'll love it! Everyone does!

Wroclaw never sleeps. Studying in Wroclaw is a lifestyle based on curiosity about the world, openness to diversity, and the desire to constantly develop. Wroclaw is the 3<sup>rd</sup> largest city in Poland and 2<sup>nd</sup> most likely chosen by foreigners and stands out as an example of innovation and success. Its dynamic economic growth, increased foreign investments and development of business environment create favorable conditions to gain experience in well-known international corporations.

It is one of the largest academic centers in Poland. You simply can't get bored in Wroclaw. Its center is packed with cafes, pubs, clubs and restaurants which bustle with life day and night. Cultural events, film and music festivals, theaters, opera and the philharmonic will surely suit all tastes. If that's not enough you can visit oldest Polish ZOO, Botanical and Japanese Garden, variety of museums, theaters and other.



# RANKINGS

## 2<sup>ND</sup> PLACE

among Polish universities in the RankProin ranking based on indicators showing the level of education

## 4<sup>TH</sup> PLACE

among universities in the Ranking of Higher Education Institutions „Perspektywy” in 2022

## GRADE A

in the U-Multirank in 3 subcategories:

- students mobility
- number of scientific publications in relation to the number of students
- the number of young scientists in relation to the total number of academic staff

## 49<sup>TH</sup> PLACE

in the QR Emerging Europe & Central Asia (EECA) University Ranking in 2022

## WHEN TO APPLY?

As every year the exact deadlines may be different it is best to check them before applying for studies. Here you can see general periods of the admission. The detailed timetable of admission is always stated on our website and updated according to current admission.

### ADMISSION PERIOD

#### **FEBRUARY**

start of admission

#### **AUGUST**

end of admission

*there are few programmes with shorter admission period - check exact deadlines on the website*

#### **SEPTEMBER**

Polish language Intensive Course

### ARRIVALS

#### **END OF SEPTEMBER**

Orientation Days

#### **1<sup>ST</sup> OCTOBER**

start of the academic year

## HOW TO APPLY?

1. Choose the programme that suits your career goals.
2. Create your online account in the system: [www.international-applications.uni.wroc.pl](http://www.international-applications.uni.wroc.pl) and follow the instruction to fill out and submit your application.
3. Within two weeks from the moment of submitting complete application and registration fee payment your application will be assessed. Check out specific deadlines for your programme on the website: [www.international.uni.wroc.pl/en](http://www.international.uni.wroc.pl/en).
4. If your application is accepted, you will find Letter of Offer and Acceptance of Offer (to be signed by you) on your online application account.
5. Accept the offer and upload signed document together with the proof of tuition fee payment (for 1st year of study) to your account.
6. Once we record the payment in the university bank account you will receive final Admission Letter.
7. Check the academic calendar (you can find it on the website).
8. Now you can arrange your trip to Wroclaw: apply for a visa, find accommodation, buy tickets for transport to Poland, pack your suitcase and all the documents used during the admission – don't forget about legalization.
9. Fill out information about your arrival in the system and check if we are able to offer you pick up service.

# PROGRAMMES IN ENGLISH

<b>BACHELOR</b> 6 SEMESTERS/3 YEARS	1 <sup>ST</sup> YEAR	OTHER YEARS	EU CITIZENS
Biotechnology	4150€	4000€	3000€
Business and Administration	3750€	3600€	2300€
Chemistry	3650€	3500€	2200€
Criminal Justice	3750€	3600€	2300€
Culture, Thought and Humanity	3650€	3500€	2400€
English for Knowledge, Culture and Innovation <b>NEW</b>	3750€	3600€	2300€
European Cultures	3750€	3600€	2300€
International Relations - Global Studies	3650€	3500€	2400€
LLB International and and European Environmental Law <b>NEW</b>	3750€	3600€	2300€
Political Science	3650€	3500€	2400€
<b>MASTER</b> 4 SEMESTERS/2 YEARS	1 <sup>ST</sup> YEAR	OTHER YEARS	EU CITIZENS
Administration in International Organizations	3750€	3600€	2300€
Astrophysics <b>NEW</b>	2150€	2000€	1000€
Biology: Integrative Biodiversity <b>NEW</b>	3950€	3800€	2800€
Chemistry: Advanced Synthesis in Chemistry	3650€	3500€	2200€
Communication Management	3750€	3600€	2300€
Communication Management (part-time*)	3150€	3000€	1950€
Culture, Thought and Humanity	3650€	3500€	2400€
Data Science	1650€	1500€	1000€
Eastern European Jewish Studies **	3750€	3600€	2300€
European Studies: EU Politics	3650€	3500€	2400€
Geography: Tourism and Hospitality	3650€	3500€	2200€
Geology: Applied Geoscience	3650€	3500€	2200€
Global Communication	3650€	3500€	2400€
International Relations - Global Studies	3650€	3500€	2400€
LLM International & European Law	3750€	3600€	2300€
Master of Economics and Finance <b>NEW</b>	3750€	3600€	2300€
Media Content Creation <b>NEW</b>	3750€	3600€	2300€
Media Content Creation (part-time*) <b>NEW</b>	3150€	3000€	1950€
Medical Biotechnology	4150€	4000€	3000€
Political Science	3650€	3500€	2400€
Public History	3750€	3600€	2300€
Sociology: Intercultural Mediation	3650€	3500€	2400€
Theoretical Physics	2150€	2000€	1000€

\*part-time studies take place on weekends \*\* 1,5 year programme

## REQUIRED DOCUMENTS

**ALL DOCUMENTS HAVE TO BE TRANSLATED TO POLISH OR ENGLISH LANGUAGE IF THEY ARE ISSUED IN OTHER LANGUAGE.**

	<b>BA/BSc</b>	<b>MA/MSc</b>
Registration fee payment	*	*
Secondary school certificate + transcript	*	
Bachelor's degree certificate+ transcript		*
Passport photocopy	*	*
Proof of English language proficiency	*	*
Passport size photo	*	*
CV, Cover Letter	**	**
Decision of nostrification	***	
Document confirming access to higher education	***	
Diploma legalization by consulate or Apostille	***	***

\* *required*

\*\* *required for some programmes-visit website*

\*\*\* *more information on the website: REQUIRED DOCUMENTS TAB*

## LANGUAGE CONFIRMATION

1. Certificate confirming the knowledge of English language ([list of accepted certificates can be found on the website](#)).
2. Previous education fully taught in English language (this information must be included to diploma or transcript).
3. Certificate confirming graduation and passing of an exam on B2 level from a one-year English course or placement test offered by the English Language Centre of the University of Wrocław.
4. English language exam passed on B2 level during bachelor/master level studies (this information must be included to diploma supplement).

Native speakers do not have to confirm the knowledge of English language.

All certificates can not be older than three years.

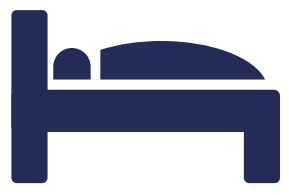
### AMONG OTHER WE ACCEPT:



## COST OF LIFE

Our University offers accommodation for International Students in halls of residence. Students live in modules comprising two single or double rooms, a kitchen and a bathroom. The monthly rent depends on the dorm and the room (it is approximately 600 PLN/month for a place in double room and 1250 PLN/month for a single room).

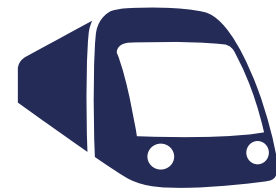
### low budget *for a month*



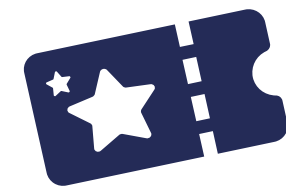
600–700 PLN  
125–150 €



600–700 PLN  
130–150 €

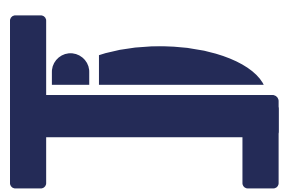


37–55 PLN  
7–12 €



200–250 PLN  
40–55 €

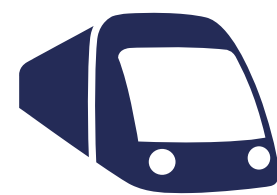
### medium budget *for a month*



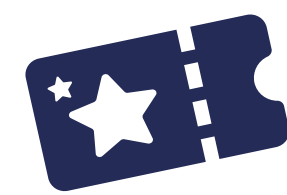
1000–1800 PLN  
215–380 €



1000–1500 PLN  
250–320 €



>55 PLN  
>12 €



200–475 PLN  
55–100 €

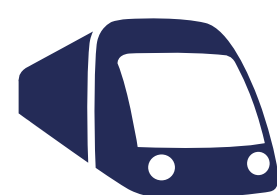
### high budget *for a month*



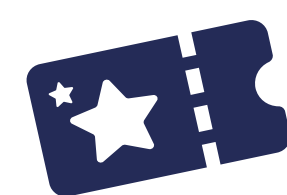
>2500 PLN  
>530 €



>2500 PLN  
>530 €



>55 PLN  
>12 €



>500 PLN  
>105 €

## STUDENT OPPORTUNITIES

UWr focuses on mobility – we want our students and graduates to be open to the world, to make studies a scientific adventure. We are part of Erasmus+ programme (students and academic staff exchange, traineeship, Erasmus Mundus), DAAD, GFPS, CEEPUS, many bilateral agreements and, as the only one in Poland, we belong to the worldwide ISEP exchange network.



Erasmus+

Our Academic Career Office helps in entering the labor market. Workshops, mentoring programs and job fairs organized by them are very popular.

**DON'T THINK TWICE  
JOIN US!**



**APPLY FOR STUDIES  
OFFERED IN ENGLISH**

[WWW.INTERNATIONAL-APPLICATIONS.UNI.WROC.PL](http://WWW.INTERNATIONAL-APPLICATIONS.UNI.WROC.PL)

ADMISSION FOR NON-POLISH CITIZENS



**READ MORE**

[www.international.uni.wroc.pl/en](http://www.international.uni.wroc.pl/en)



**E-MAIL US**

[international@uwr.edu.pl](mailto:international@uwr.edu.pl)

Do you want to hear more about student experience at the UWr? Scan the QR code to check the testimonials from our alumni!



# INTERNATIONAL OFFICE



**ul. Kuźnicza 35**  
**room 4**  
**50-138 Wrocław, Poland**



**+48 71 375 28 77**  
**+48 71 375 28 64**



**[www.rekrutacja.uni.wroc.pl](http://www.rekrutacja.uni.wroc.pl)**

ADMISSION FOR POLISH CITIZENS AND STUDIES  
IN POLISH LANGUAGE



**[/International.Office.University.of.Wroclaw](https://www.facebook.com/International.Office.University.of.Wroclaw)**



**[internationaloffice\\_uniwroc](https://www.instagram.com/internationaloffice_uniwroc)**

**EN**

**[www.elc.uni.wroc.pl](http://www.elc.uni.wroc.pl)**

PREPARATORY COURSE OF ENGLISH LANGUAGE

**PL**

**[www.sjpik.uni.wroc.pl](http://www.sjpik.uni.wroc.pl)**

PREPARATORY COURSE OF POLISH LANGUAGE

